



Waste Management Europe

Exhibition & Conference

Committed to a Greener Planet

21-23 JUNE 2022 BERGAMO,
ITALY

The European exhibition
and conference for Waste
Management and the
Circular Economy.

www.wme-expo.com

Supporting partner



Supporting Association



Venue partner



Organised by



Association partners



**WASTE MANAGEMENT EUROPE
CONFERENCE AND EXHIBITION IS
BRINGING TOGETHER INDUSTRY
LEADERS, INNOVATORS, BUYERS,
REGULATORS AND GOVERNMENT
TO NETWORK, COLLABORATE
AND DEBATE THE FUTURE OF
WASTE MANAGEMENT AND THE
SUSTAINABLE ECO-FRIENDLY
CIRCULAR SOLUTIONS URGENTLY
NEEDED BY OUR PLANET.**

A very warm welcome to Waste Management Europe 2022 from Bergamo, Italy!



Managing waste in an environmentally sound manner and making use of the secondary materials they contain are key elements of the EU's environmental policy. Collaboration throughout Europe is needed to ensure the continent reaches its greenhouse emission targets; collaboration not just through knowledge exchange, debate, technology and bilateral trade but working together to build a pathway for the region to pursue and deliver.

Time is against us, so we need to act now. Waste Management Europe will bring together the stakeholders from the waste management and circular economy value chain to address the challenges of today, tomorrow and beyond.

Participating at WME will be:

- Policy-makers and Central Government officials to promote their "green credentials", gain political support, prepare a road map for policy direction and address the circular economy.
- Local government officials who as key purchasers of contracts need to deliver improved environmental performance from waste management.
- Large multinational waste contracting companies to promote themselves as partners who will deliver effective waste management arrangements, improved environmental performance and better value-for-money.
- Technology and service providers promoting their products and solutions that will be a key driver in reducing waste

WME will support and enhance Europe's position as the world leader in responding to the challenge of climate change by bringing together representatives from all sectors to showcase the political leadership, policy framework, delivery arrangements and technologies that will fulfil the industry's future needs.

We look forward to welcoming you all to Waste Management Europe on 21 -23rd JUNE 2022.

A handwritten signature in blue ink that reads "Daniele Zipoli". The signature is fluid and cursive.

Daniele Zipoli
Project Manager, IES Group

The Mission for Waste Management Europe

1. Position

Europe as world leader in the quest for a clean and sustainable environment.

2. Provide

an international meeting place for environment thought leaders to debate, formulate and implement global strategies for waste management.

3. Present

a global platform for innovation, technology, products and services to be showcased, presented and demonstrated.

4. Produce

a platform where the entire environmental value chain can meet, exchange knowledge, network, share ideas and conduct business.

WME Exhibition and Conference is the European forum for the entire waste management value chain to meet, network, learn and do business.

Why Waste Management Europe?

- With the world facing an ambitious target of net-zero carbon emissions, Europe is the world leader in clean and sustainable environmental technology and solutions. WME will showcase the latest technologies and solutions.
- With waste projected to increase by 75% by 2050, we must implement environmental solutions at an urgent pace to ensure a safe and clean environment; European countries have proven solutions from which the world can learn. WME will highlight all the critical issues we need to address now.
- Whilst many countries are recycling a large portion of their waste, much of it remains in landfill sites which has a significant impact on pollution. WME will address these challenges and opportunities.
- Waste Management Europe will discuss, debate and showcase solutions that can reduce the amount of waste generated, increase recycling rates and reduce landfill. WME will be the event for the industry to meet, network and debate. WME will be the event for the industry to find the way forward.
- The circular economy is having a significant impact on the waste management sector, but it is not enough. The key stakeholders will attend WME and challenge the sector to do more at a quicker pace.
- Waste Management is not a European problem; it is a global problem. Europe is leading the way in waste management, and WME provides an international forum to address critical topics and discover and implement solutions.

Waste Management Europe

The European Waste Management Outlook



Addressing the critical topics that impact the waste management sector



Circular Economy

More and more countries are implementing a circular economy aimed at eliminating waste and the continual use of resources. WME will showcase what countries are doing to implement a circular economy.

Recycling, Reuse & Recovery

WME will cover the entire waste management value chain and address the importance of each stage in the cycle.

Governance & Policy

Europe needs to be more aligned in its governance and policy. WME will host key policy makers to address the challenges and discuss improved working practices.

Bi-Lateral Trade

WME will provide a platform for stakeholders to promote bi-lateral trade and investment across Europe and beyond.

Data, Technology & Innovation

Technology and data will play a major role in the management of waste, ensuring a cleaner and more sustainable environment. WME will investigate the advancements in data and technology, showing how it can help improve waste management processes.

Machinery & Equipment

The development of machinery and equipment is at the forefront of improving the waste management sector. The WME exhibition and conference will showcase the latest equipment on the market.

Waste to Power

Waste will play an important role in generating renewable energy for power and heating, displacing fossil fuels to ensure a cleaner environment. WME will highlight the opportunities.

Waste to Resource

Waste should not be seen as a problem, it should be seen as an opportunity and a valuable resource. WME will look at how waste can become a sustainable benefit.

Waste Treatment

WME will address the challenge of waste having the least practicable impact on the environment.

Logistics

Logistics management plays a vital role in the development of the circular economy and managing waste. WME will look at a range of logistic solutions to address the challenges municipalities face.

Sustainable Cities & Municipalities

WME will address how the circular economy can help cities and municipalities become greener and more sustainable.

Landfill Management

WME will discuss the best methods, practices and technologies to manage solid waste, recycling and disposal in order to protect the environment.

Waste Management Europe in numbers

Europe's most important event for the waste management and circular economy sector

WME will play host to the entire waste management value chain during the three-day conference and exhibition.

Visit the exhibition where the leading equipment manufacturers and service providers will be showcasing their products, technologies, innovations and services.

Participate in the conference where speakers and delegates will exchange ideas and knowledge, debate, address critical policy issues and present the latest projects and technologies.

WME provides many opportunities over three days for you to engage, collaborate and network.

100

Speakers

200

VIPs & C-Suite Executives

20

Conference Sessions

8,000

Attendees

500

Delegates

300

Exhibitors

20+

Countries

5

Industry Zones

4

International Pavilions

Youth & Diversity Program

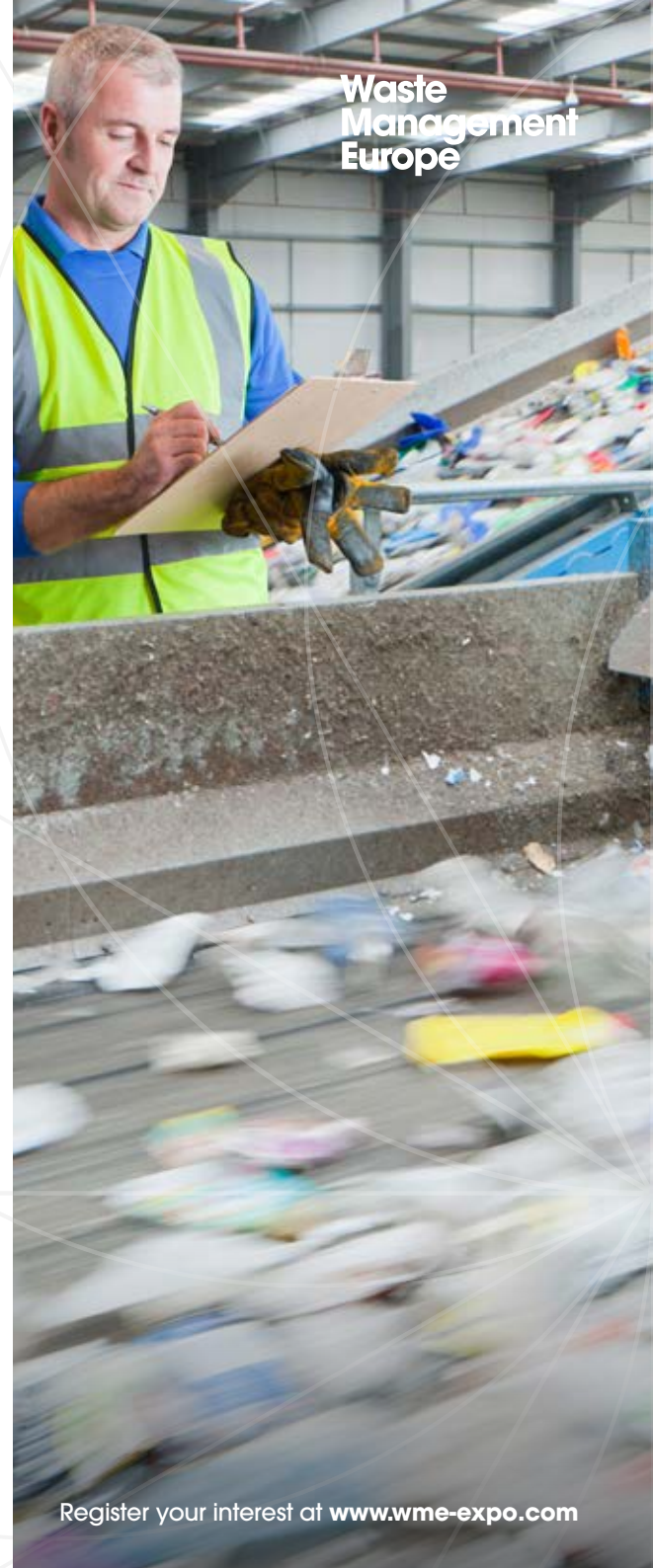
6

Training sessions

5

Supporting Associations

Waste Management Europe



Register your interest at www.wme-expo.com

The Exhibition

Exhibit at Waste Management Europe to achieve your business objectives and ensure a return on your investment.

Why Exhibit?

- **Conduct** new business transactions
- **Showcase** your brand to new and existing clients
- **Gain** entry to new markets
- **Network** with attendees across the entire waste management value chain
- **Launch** new products
- **Be associated** with the region's most successful waste management exhibition and conference
- **Meet** investors to expand your business opportunities

WME plays host to the leading equipment, service and technology companies in the environment sector



TRANSPORTATION

Refuse Collection
Vehicles
Superstructures
Sweepers
Bins
Logistics
Tipping and Dumping
Maintenance
Lifting Equipment
Vehicle Tracking



WASTE MANAGEMENT

Recycling
Refuse Treatment
Biological Treatment
Recovery
Composting
Landfills
Bins
Consulting
Materials Handling
Engineering Services
Cleansing
Shredders



HEALTH AND SAFETY

Accident Prevention
Clothing
PPE
Training
Contamination Management
Consultancy
Accreditation Services



MACHINERY

Balers
Composters
Compactors
Pumps & Valves
Containers
Maintenance
Feeders and Conveyors
Fluid Bed Dryers
Separation / Sorting Equipment
Lifting Equipment
Shredders



DIGITAL

Artificial Intelligence
Robots
Automation Equipment
Data Analytics
Sensors
Vehicle Tracking
Bin Tracking



WASTE TO ENERGY

Power Generation
Biomass
Combustion Furnaces
Turbines
Boilers
Separation & Sorting Equipment



Start-Up Zone

The growth and development of a sustainable and clean environment are reliant on new companies developing innovative technologies and services. The Start-Up Zone provides new companies with an opportunity to share their ideas, display their products and services, meet and network with the energy community at a subsidized rate. Your company needs to be under three years old and have less than five employees to participate in the Start-Up Zone.



WME Insights

WME Insights is reserved for companies who wish to deliver presentations and thought leadership on projects, products, services, research and development and case studies. During the event, you can participate in fully interactive sessions with WME attendees and share your ideas, knowledge and experience.



Lunch & Learn

Hear from an expert during the lunch and learn sessions. Over the three event days an expert will share their knowledge and experience on a unique subject.



Industry Zones

The WME exhibition will play host to five industry zones where companies can showcase their products, technologies, innovations and services. In addition, they will have an opportunity to present their products and services through a 15-minute presentation.



International Buyer Program

Engage in pre-arranged meetings with buyers from the waste management sector. Trade delegations from Europe's leading trading partners will participate in exhibition tours and closed-door meetings.



Training Workshops

Over the course of Waste Management Europe participate in our dedicated training sessions. Whether you are looking for a refresher course on the waste management sector or a specific training need, we have a course that will suit your needs.

Participation

Participation costs:

OPTIONS	COST
Space only Rate:	€ 325,00 /SQM
Shell System (Includes: Carpet, Walls, Lighting, Company Name printing on the Fascia, Table, Chairs):	€ 375,00 /SQM
Turnkey Package (Includes: Carpet, Walls, Lighting, Company Name printing on the Fascia, Reception Desk, Private office with Table and Chairs):	€ 415,00/SQM
Outdoor Space Rate:	€ 90,00/ SQM

For your Turnkey solution or stand projects please contact

Matteo Savarese
Call: +39 0630883030
Email: ms@ies.co.it

Register your interest at www.wme-expo.com



**POSITION YOUR
COMPANY AS A
LEADER IN FRONT
OF THOUSANDS
OF WASTE
MANAGEMENT
INDUSTRY
PROFESSIONALS.**

Visiting Waste Management Europe

Why Visit?

- Conduct a years worth of business in just 3 days
- Meet, network, share ideas and conduct business transactions with the entire environment community over 3 days
- Get to know the latest technological developments and innovations
- Find solutions to improve your company's efficiency and bottom line.
- Gain a vision of the future
- Discover new ideas and inspiration
- Participate in live product demonstrations
- Get training and boost your expertise
- Find out about the latest international regulations
- Find solutions for your engineering requirements
- Forge new partnerships
- Generate new business opportunities
- Network with the environment community at the various social functions

Who will you meet?

- Ministers and Government Officials
- Chairmen, CEOs and Presidents
- Local Government Representatives
- Policy Makers
- Traders
- Plant Managers
- Engineers
- Research & Development
- Purchasing Managers
- Business Development Executives
- Press & Media



Attendees at Waste Management Europe will represent the entire waste management value chain



Exchange
knowledge and
learn



Network with peers
and the industry's
brightest minds



Identify new
opportunities and
markets



Source new
products and
services



Discover the latest
technologies and
innovations



Learn about
the latest HSSE
technologies and
services



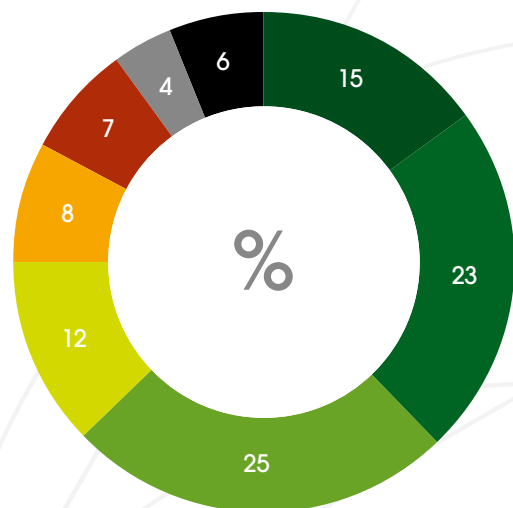
Hear the latest
initiatives from waste
management
leaders



Conduct new
business

Regional & Global Attendance

8,000 visitors from 30 countries



**NETWORK WITH
THE STAKEHOLDERS
FROM THE WASTE
MANAGEMENT
AND CIRCULAR
ECONOMY VALUE
CHAIN AT WASTE
MANAGEMENT
EUROPE.**

The Waste Management Europe Conference

The Waste Management Europe Conference is host to an array of content including keynote addresses, strategic and technical presentations, workshops, lunch & learn sessions.

By attending the conference you will have three days to network with your peers, engage in debate, learn and share knowledge and hear the latest insights in the future of the waste management industry.

WME provides many opportunities over three days for you to engage, collaborate and network.



Waste
Management
Europe



Register your interest at www.wme-expo.com

Participation and Collaboration



**3-day
Conference**



**3 Keynote
Addresses**



**3 CEO
Panels**



**5 Strategic
Panels**



**15 Technical
Sessions**



**Thought
Leadership**



Networking



**Breakfast
Briefings**



**Private
Round Tables**

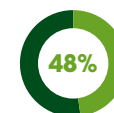


**Talent
Program**

Why Attend as a delegate?

- Network with the green & circular economy value chain professionals
- Meet opinion leaders and the most innovative entrepreneurs in the circular economy
- Talk to the circular economy's leading experts: scientists, engineers, entrepreneurs and managers

Delegate profile



Technical Audience

Project Managers, Technical Managers, Technical Directors, Engineers, Purchasing Managers, Purchasing Directors, Research and Development



Commercial Audience

Business Development Managers, Sales Managers, Marketing Managers, Traders, Logistics, and Operations Managers



Senior and C-Level Audience

CEO, COO, Presidents, Vice Presidents, General Managers, Country Managers, Business Unit Managers and Directors

Waste Management Europe Features

Not only does WME give you access to the leading exhibition and three conferences in the Waste Management sector, but it also provides a packed agenda over three days for you to embrace all elements of the industry.

Waste Management Awards and Gala Dinner

Celebrate the industry's achievements with your peers. WME will highlight six key achievements at a special Gala Dinner awards night. Enjoy a fun-filled evening of fine cuisine, entertainment and the opportunity to spend time with colleagues from the industry.



Plant Tour

Take the opportunity to go on one of the waste management plant tours where you will be able to see a live plant in action.

Youth Program

The development of the waste management sector is dependent on future generations embracing the industry, sharing their ideas and getting involved at an early stage. Waste Management Europe will provide a platform for students and graduates to embrace the industry and get a real feel for the opportunities the sector presents.

Press Briefings

Launching a product or have a major industry announcement to make? Use the WME press briefing area to host a press conference and address the journalists and analysts.

Workshops

Looking to provide a comprehensive overview of your business, project, or technology to a select audience? If so, utilize the workshop zone to host 60- minute closed door meetings.

Waste
Management
Europe



Register your interest at www.wme-expo.com

Sponsorship Opportunities

Be seen by a global audience of energy professionals at WME 2022

Thousands of decision makers from the environment sector visit the conference and exhibition over three days. Make sure your brand, products and services are seen by key decision-makers throughout the event by choosing one of our many sponsorship opportunities.

Ensure you have a high profile and prominent position at WME 2022.
A sponsorship will:

1. Ensure your brand is seen by the key decision-makers within the waste management value chain before, during and after WME 2022 through our print and digital marketing activities.
2. Enhance your presence at WME 2022 and get comprehensive brand recognition.
3. Drive traffic to your booth to ensure the key people view your innovations, products and services.
4. Maintain high visibility as a high-profile WME supporter.
5. Generate new sales leads.
6. Associate yourself with the leading waste management event for Europe.
7. Network with the key decision-makers in the waste management sector.
8. Meet new contacts in your market.
9. Leave a long lasting impression after WME concludes.

Sponsorship opportunities at a glance.
We have a sponsorship opportunity for you!

CATEGORY

Co-Host	Silver
Diamond	Bronze
Gold	Associate

INDIVIDUAL SPONSORSHIP ITEMS

Customised packages	Lanyards	Conference coffee breaks
Closing reception	Global meetings program	Delegate lunches
Registration	Conference binders	Event app
Lanyard trees	Exhibition hall signs	Call entrance arches
Host partner	Water bottles	Breakfast briefings
Delegate lounge	Buses/transportation	Charging stations
Delegate bags	Event map	Product presentations
Visitor bags	Exhibitor and product locator	Passport competition

Waste Management Europe Features

The Conference

Ministerial address
Global Energy Leaders Debate
Panel Sessions
Keynote Addresses
Strategic Content
Technical Content
Workshops
Closed-Door Round Tables

The Exhibition

International Exhibition
Country Pavilions
Demo Theatres
Product Zones
Media Lounge
Private Meeting Rooms
Poster Sessions
Sponsorships

Networking

Welcome Reception
Gala Dinner & Awards
VIP Lounge
Delegate Lounge
Delegate Lunch
Launch Party
Global Meetings Program
Coffee Breaks

Event schedule at a glance

	TUESDAY	WEDNESDAY	THURSDAY
Registration	8am – 5pm	8am – 5pm	8am – 2pm
Breakfast Briefings	8am – 9am	8am – 9am	8am – 9am
Exhibition Hours	9.30am – 5pm	9.30am – 5pm	9.30am – 5pm
Technical Sessions	9am – 12.30pm 2pm – 5pm	9am – 12.30pm 2pm – 5pm	9am – 1pm
Networking Breaks	9.30am / 11.30am / 3pm	9.30am / 11.30am / 3pm	9.30am / 11.30am / 3pm
Keynote Address	10am – 10.45am	10am – 10.45am	10am – 10.45am
Plenary Session	10.45am – 12.30pm	10.45am – 12.30pm	10.45am – 12.30pm
Exhibition Presentations	11am – 1pm 3pm – 4.30pm	11am – 1pm 3pm – 4.30pm	9am – 1pm
Lunch Break	12.30pm – 2pm	12.30pm – 2pm	12.30pm – 2pm

The Venue

Where we are

Fiera Di Bergamo is located in a strategic area of the city of Bergamo, easily accessible by all means of transportation. A few kilometres away is the A4 highway Milan – Venice.

Bergamo city centre is just 4km away, with a railway station and a good network of bus links to Fiera Di Bergamo.

Il Caravaggio airport connects Bergamo with 130 destinations and 35 foreign countries (Europe, Mediterranean and North Africa).

During Exhibition & Conferences Fiera Di Bergamo organizes a regular shuttle bus between the airport and the venue.



LEGENDA

- | | |
|---------------------|------------------------|
| Registration | Infirmary |
| Hall A | Firefighter Protection |
| Conference Centre | ATM |
| Press Room | Police Protection |
| Bar/Cafeteria | Technical Services |
| Delegate Restaurant | Taxi |
| Restaurant | Airport Shuttle |
| Cloakroom | Exhibitor Parking |
| Toilet | Visitor Parking |

This venue map is provisional.
Please check the last available
plan at ies@es.co.it



Waste Management Europe

Exhibition & Conference

Committed to a Greener Planet

21-23 JUNE 2022 BERGAMO,
ITALY

WME provides an unrivalled opportunity for your company to thrive in the move to a sustainable world. Contact us to discuss your participation:

For exhibition and sponsorship information:

Daniele Zipoli
Project Manager
Email: dz@ies.co.it
Phone: +39 0630883030
Mobile: +39 3341572811

For conference information:

Nicholas Hares
Conference Producer
Email: nh@ies.co.it

For sales & marketing information:

Angela Romano
Sales Executive
Email: ar@ies.co.it
Phone: +39 0630883030

Organised by

IES | Events

www.wme-expo.com